



March 1997

EMBARGO: 11:30 AM (CANBERRA TIME) MON 24 MAR 1997

# Business Indicators

## Australian Capital Territory

Handwritten text: *Business Indicators*

1	2	3	4	5	6	7	8	9	10	11	12	13	14	15	16	17	18	19	20	21	22	23	24	25	26	27	28	29	30	31	32	33	34	35	36	37	38	39	40	41	42	43	44	45	46	47	48	49	50	51	52	53	54	55	56	57	58	59	60	61	62	63	64	65	66	67	68	69	70	71	72	73	74	75	76	77	78	79	80	81	82	83	84	85	86	87	88	89	90	91	92	93	94	95	96	97	98	99	100
---	---	---	---	---	---	---	---	---	----	----	----	----	----	----	----	----	----	----	----	----	----	----	----	----	----	----	----	----	----	----	----	----	----	----	----	----	----	----	----	----	----	----	----	----	----	----	----	----	----	----	----	----	----	----	----	----	----	----	----	----	----	----	----	----	----	----	----	----	----	----	----	----	----	----	----	----	----	----	----	----	----	----	----	----	----	----	----	----	----	----	----	----	----	----	----	----	----	----	-----



## NOTES

### FORTHCOMING ISSUES

<i>ISSUE</i>	<i>RELEASE DATE</i>
April 1997	21 April 1997
May 1997	19 May 1997

### SYMBOLS AND OTHER USAGES

ACT	Australian Capital Territory
n.a.	not available
n.p.	not available for publication
p	preliminary
—	nil or rounded to zero
*	Represents data with a standard error of greater than 25%. Caution should be exercised when using this data.

### INQUIRIES

For further information about statistics in this publication and the availability of related unpublished statistics, contact Kingsley Green on Canberra (06) 207 0286 or any ABS State office.

For information about other ABS statistics and services, please contact Information Services on Canberra (06) 252 6627, or 252 6007 or any ABS State office.

Dalma Jacobs  
Regional Director  
Australian Capital Territory



## SUMMARY OF FINDINGS

### UPDATED SERIES

Series updated since the February 1997 issue are: population; labour force; industrial disputes; average weekly earnings; housing finance; building approvals; average retail prices; retail turnover; house prices; tourism accommodation and new motor vehicle registrations. Feature articles on Persons not in the Labour Force and Self Employment in the ACT are included on pages 7, 8 and 9.

### NOTABLE MOVEMENTS

Population	The estimated resident population of the ACT at 30 September 1996 was 308,200, an increase of 700 since the June quarter 1996 and 3,400 since 30 September 1995. The growth rate during the 12 months to September 1996 was 1.1% which is equal to the growth rate for the preceeding 12 month period.
Labour force	The trend number of persons employed in the ACT has increased for each of the last two months from 152,600 persons in December 1996 to 153,400 persons in February 1997. This follows on from a continuous 13 month decline in employment which stood at 159,700 in October 1995. Over the last two months, the trend number of persons unemployed fell by 600 to 13,300 with the trend unemployment rate decreasing from 8.3% to 8.0%. The trend participation rate has remained stable at 71.1% over the period December 1996 to February 1997.
Industrial disputes	In November 1996, there were 148 working days lost per 1,000 employees in the ACT compared with 129 working days lost per 1,000 employees nationally. For the ACT, this was the highest rate of working days lost per thousand employees since the 145 reported for the year ended June 1988.
Average weekly earnings	Trend estimates of average weekly earnings for the ACT continued the steady upward movement of the past two years. The trend average weekly earnings for November 1996 was \$664.50, an increase of 1.9% from the previous quarter. Nationally the trend average weekly earnings increased by 0.6% to \$571.90.
Housing and construction	<p>The trend number of dwelling units approved in the ACT decreased by 3.4% to 171 dwelling units in January 1997, but over the last six months it has remained relatively level. Nationally the total number of dwelling units approved increased by 1.3% in January 1997.</p> <p>The value of non-residential building approvals increased 280.6% on the previous months figure to reach \$62.8 million in January 1997. The significant increase was due to an approval lodged for refurbishment of public sector buildings.</p>
Housing finance	The trend number of dwelling units financed (includes refinancing) in the ACT during January 1997 decreased to 846 dwellings, a slight fall of 0.2%. The trend estimate for the value of commitments in the ACT in January 1997 was \$88.7 million, an increase of 0.7% on the previous month. Refinancing of existing dwellings comprised 29.4% of the total number of dwelling units financed in January 1997, which was up 23.5% on the previous month.
Retail turnover	The trend estimate for retail turnover in the ACT for January 1997 was \$197.2 million, up slightly on the previous month's figure of \$196.3 million. ACT trend retail turnover increased by 0.5% since the previous month, while the national trend retail turnover experienced a small increase of 0.2% on the previous month.
House prices	The quarterly established house price index for Canberra fell by 0.5% in the December quarter 1996 after a decrease of 0.2% in the September quarter 1996. In contrast, the weighted average of the six State capital cities increased by 0.3% in the December quarter 1996. In the 12 months

to December 1996, the price index fell by 1.6% for the ACT compared with a 1.7% increase for the capital cities' weighted average.

Tourist accommodation

Room occupancy rates for ACT hotels, motels and guest houses in the September quarter 1996 was 57.5%, down 6.0 percentage points on the previous quarter and 5.2 percentage points on 12 months ago. In contrast, the national room occupancy rate in the September quarter 1996 increased 2.7 percentage points on the previous quarter, but was 1.1 percentage points down on the September 1995 figure.

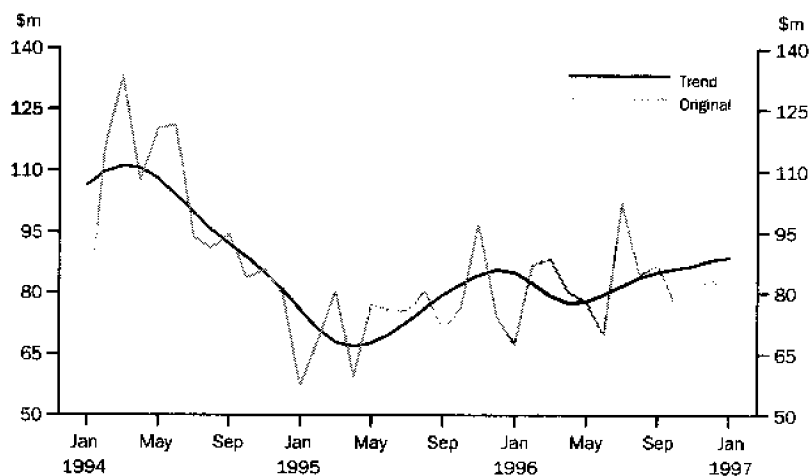
Trend takings from accommodation at 1989-90 prices was \$15.9 million in the September quarter 1996, up 0.6% on the previous quarter. In contrast, the value of takings fell 0.6% compared with the September quarter 1995.

Motor vehicle registrations

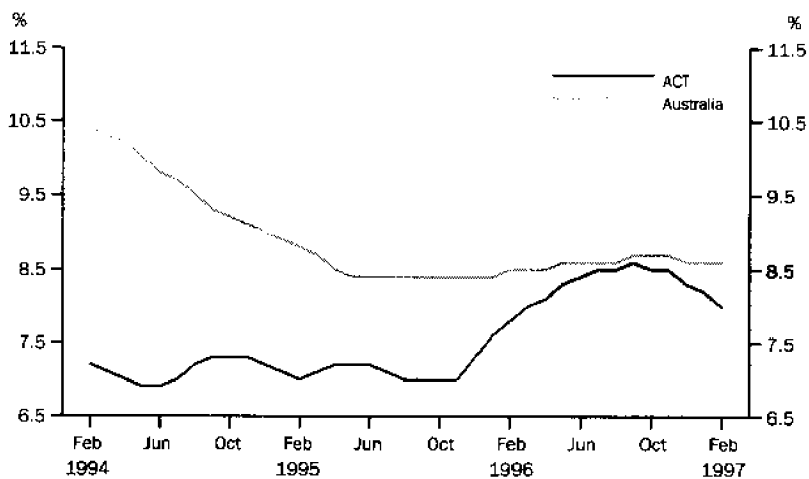
The trend estimate for new motor vehicle registrations for the ACT in January 1997 was 879. The series has now recorded two consecutive months of increase, after 10 consecutive months of decline. Nationally, the trend for total new registrations in January 1997 recorded a rise of 763 representing a 1.4% increase on the previous months figure.

## SELECTED BUSINESS INDICATORS

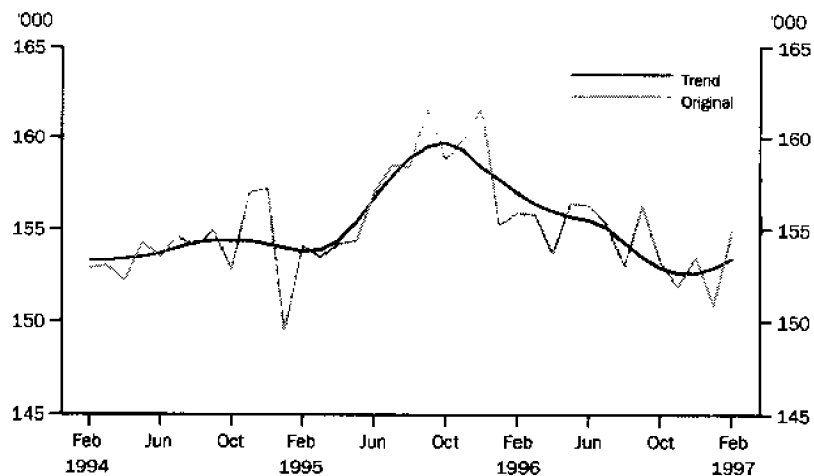
### HOUSING FINANCE COMMITMENTS



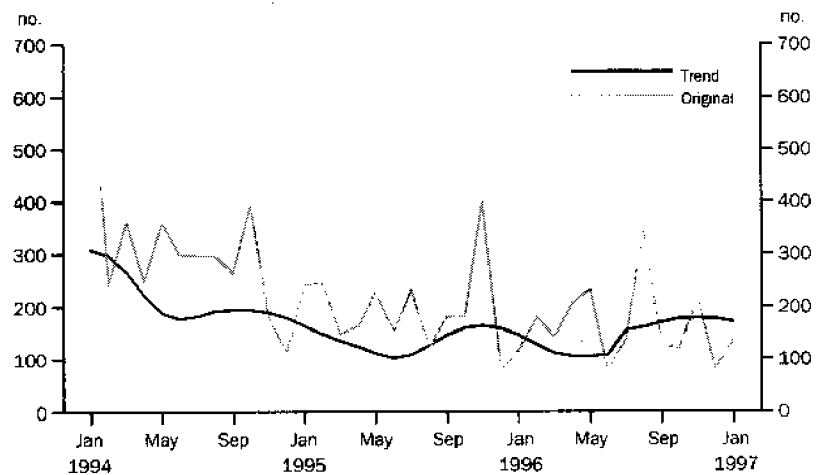
### LABOUR FORCE — TREND UNEMPLOYMENT RATE



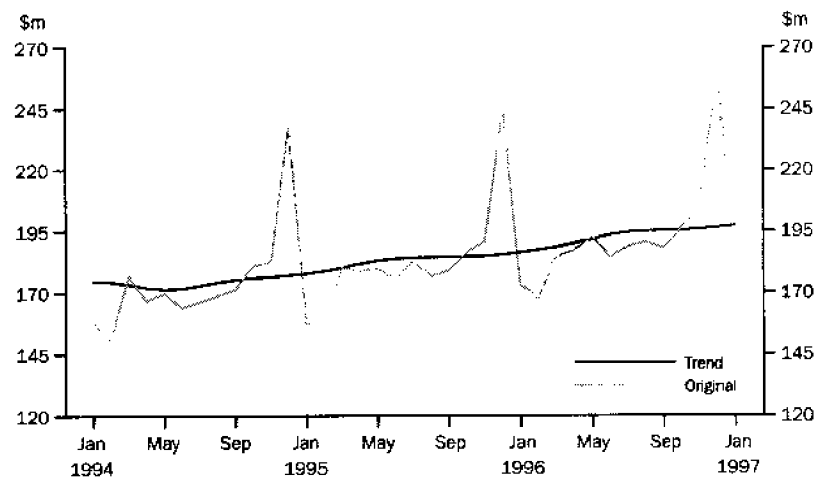
### LABOUR FORCE — EMPLOYMENT



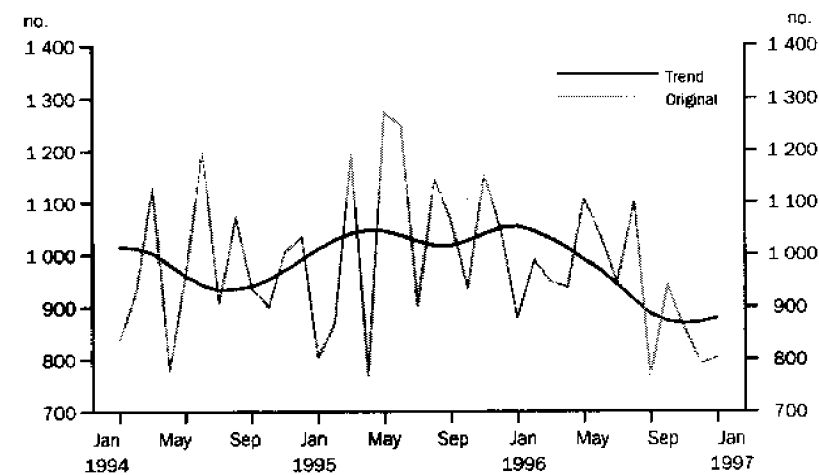
# BUILDING APPROVALS — DWELLING UNITS APPROVED



# RETAIL TURNOVER



# NEW MOTOR VEHICLE REGISTRATIONS





There were 49,273 persons aged between 15-69 years in the ACT who were not in the labour force (excluding those in institutions and boarding school pupils) in September 1996. This represents 22.6% of the civilian population in this age group. Of those not in the labour force, the proportion of females (64.5%) was considerably higher than males (35.5%). These proportions were consistent with the national figures of 67% and 33% respectively.

The proportion of persons not in the labour force generally rises with age for both males and females. The exceptions are the 15-19 years age group with high levels of educational participation, and females during the main child bearing years of 25-34 years.

There were also more females than males in all age groups except with the 15-19 year age group. The proportion of females not in the labour force ranged from 20.0% for the 20-24 years age group to 98.2% for the 65-69 years age group.

Of the 16,469 persons marginally attached to the labour force in September 1996, 93.4% were not actively looking for work but available to start within four weeks, and 6.6%\* wanted to work and were actively looking for work.

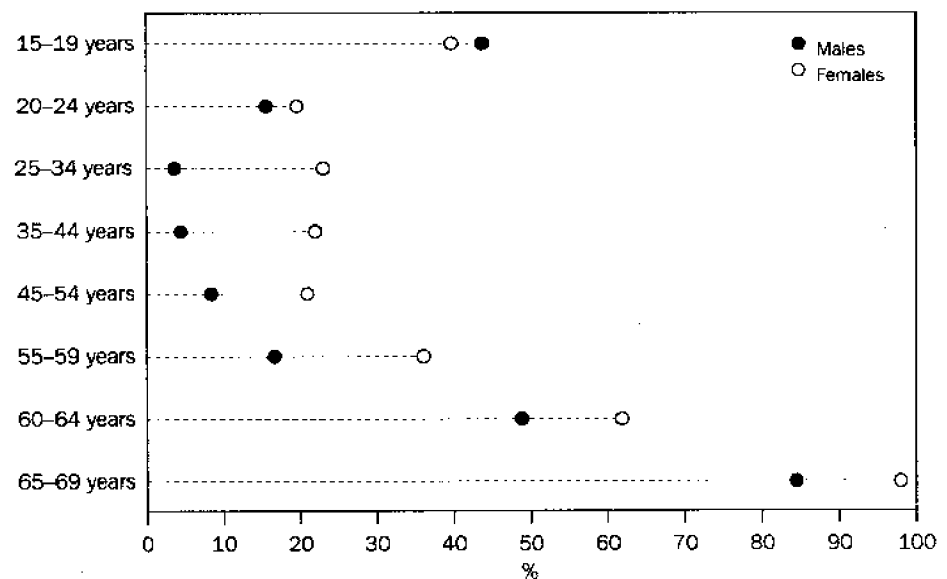
Some 61.5% of persons marginally attached to the labour force were not actively looking for work, but intended to enter the labour force in the next 12 months. The main reason for not actively looking for work most commonly reported by males in this group were 'personal reasons' (67.5%) and 'attending an educational institution' (51.2%). In contrast, for females, the most commonly reported reasons were 'personal reasons' (41.5%), 'family reasons' (34.5%) and 'childcare' (30.4%).

The number of discouraged job seekers at September 1996 was estimated at 1,283 persons or 7.8% of the persons with marginal attachment to the labour force. The majority of male discouraged job seekers were aged 65-69 years (63.9%). In contrast, females in the 15-19 year age group (34.6%\*) recorded the highest proportion of discouraged job seekers.

Of the 32,804 persons without marginal attachment to the labour force, 23,760 persons (72.4%) did not want to work. This includes those permanently unable to work, and persons in institutions.

However, there were 6,613 persons (20.2%) without marginal attachment to the labour force who did want to work, but were not actively looking for work, and were not available to start within four weeks. Some 65.7% were female, 24.2% were aged 25-34 years, and 47% reported their main activity as 'attending an educational institution'.

# PROPORTION OF PERSONS NOT IN THE LABOUR FORCE BY AGE, SEPTEMBER 1996



## TRENDS IN SELF EMPLOYMENT IN THE ACT

In February 1996, there were 9,011 self-employed persons in the ACT, comprising 5,695 (63.2%) full-time workers and 3,315 (36.8%) part-time workers. The greatest concentration of self-employed persons in the Property and Business Services (25.1%), followed by Construction (17.2%) and Retail trade (12.4%).

Between February 1978 and February 1996, the number of self-employed persons in the ACT increased by 104.5% from 4,400 to 9,000. This growth was largely due to a 191.7% increase in the number of women entering self employment (from 1,200 in February 1978 to 3,500 in February 1996). In comparison, male self employment increased 71.9% over the same period from 3,200 to 5,500.

While the number of persons in self employment more than doubled over the period February 1978 to February 1996, the self employment rate remained relatively stable increasing from 4.6% in 1978 to 5.8% in 1996. The self employment rate was higher for males than for females. Over the period February 1978 to February 1996, the male self employment rate increased slightly from 5.8% to 6.6% while the female self employment rate increased from 3.0% to 4.8% over the same period.

In February 1996, self-employed persons were more likely to work longer hours than employees. In February 1995, the average number of hours worked per week by full-time self-employed persons (33.9 hours per week) was 0.3% less than the average for employees Australia-wide (34 hours per week). By February 1996, the average for self-employed persons had increased to 38.2 hours per week, 6.1% greater than the average for employees Australia-wide (36 hours per week). In February 1996 males worked an average of 4.4 hours extra per week than did their female counterparts.

# SELF EMPLOYMENT RATE IN THE ACT



# 1

## AUSTRALIAN BUSINESS EXPECTATIONS: SALES, MARCH QUARTER 1997/DECEMBER QUARTER 1997, EXPECTED AGGREGATE CHANGE

Period	Australian Capital Territory	Australia
	%	%
<b>Short-term</b>		
Dec qtr 1995-Mar qtr 1996	0.5	-0.2
Mar qtr 1996-Jun qtr 1996	1.8	2.3
Jun qtr 1996-Sep qtr 1996	0.4	1.6
Sep qtr 1996-Dec qtr 1996	-0.3	1.6
Dec qtr 1996-Mar qtr 1997	1.1	0.4
<b>Medium-term</b>		
Dec qtr 1995-Dec qtr 1996	3.8	4.4
Mar qtr 1996-Mar qtr 1997	2.3	4.1
Jun qtr 1996-Jun qtr 1997	1.4	3.6
Sep qtr 1996-Sep qtr 1997	1.5	3.1
Dec qtr 1996-Dec qtr 1997	2.2	3.1

Indicator	Unit	Australian Capital Territory			Australia		
		Latest figure	Previous period	Change from Same period previous year	Latest figure	Previous period	Change from Same period previous year
<b>POPULATION, VITAL AND LABOUR</b>							
POPULATION Sep qtr 96	'000	308.2	0.2	1.1	18 348.7	0.3	1.3
Natural increase	no.	747	-12.9	6.4	27 850	-10.7	-5.0
Net migration	no.	-28	-113.7	-133.7	31 671	63.8	1.9
Total increase	no.	719	-32.4	-8.4	59 521	17.8	-1.5
<b>LABOUR FORCE, Jan 97</b>							
Original series							
Employed	'000	154.9	2.7	-0.6	8 349.9	0.6	1.0
Unemployed	'000	15.4	1.3	2.0	906.1	6.1	5.8
Unemployment rate(a)	%	9.0	-0.2	0.2	9.8	0.5	0.4
Participation rate(a)	%	72.6	1.7	-1.2	63.9	0.7	-0.1
Long-term unemployed (Dec 96)	no.	3 424	25.6	24.1	231 945	2.8	-3.7
Long-term unemployed as percentage total unemployed (Nov 96)(a)	—	22.5	3.1	3.6	27.2	-0.8	-1.7
Trend series							
Employed	'000	153.4	0.3	-2.3	8 418.8	0.1	1.3
Unemployed	'000	13.3	-2.2	0.8	796.3	0.1	3.6
Unemployment rate(a)	%	8.0	-0.2	0.2	8.6	—	0.1
Participation rate(a)	%	71.1	—	-2.4	63.6	—	-0.1
JOB VACANCIES, Nov 96	'000	1.4	55.6	—	62.3	-1.9	11.1
<b>INDUSTRIAL DISPUTES IN PROGRESS, Oct 96</b>							
Working days lost	'000	1.0	—	—	51.7	52.5	-24.7
Days lost per '000 employees (year ended Oct 96)	no.	148.0	5.0	1 750.0	129.0	-1.5	51.8
<b>BUILDING AND CONSTRUCTION</b>							
<b>HOUSING FINANCE, Dec 96</b>							
Secured commitments to individuals for							
Original series							
Construction of dwellings	\$m	3.7	-46.4	-35.1	474.2	-0.8	16.4
Purchase of new dwellings	\$m	4.4	-33.3	-65.4	204.2	7.0	24.5
Purchase of established dwellings	\$m	47.4	-7.4	48.6	3 076.5	-3.5	19.4
Total housing commitments	\$m	77.7	-7.4	15.3	3 754.9	-2.6	19.3
Seasonally adjusted series							
Total housing commitments	\$m	96.2	6.3	9.7	4 607.9	10.5	18.3
Trend series							
Dwelling units financed	no.	846	-0.2	-1.3	40 748	0.2	5.8
Total housing commitments	\$m	88.7	0.7	4.2	4 306.2	1.6	15.1
<b>BUILDING APPROVALS, Dec 96</b>							
Original series							
Dwelling units	no.	135	66.7	16.4	10 106	2.7	21.7
Value of new residential	\$m	15.1	48.0	25.8	1 003.5	3.8	26.1
Value of residential alterations and additions	\$m	4.1	13.9	57.7	188.3	8.7	12.5
Value of non-residential	\$m	62.8	280.6	390.6	1 033.5	6.8	30.1
Value of total building	\$m	82.0	169.7	200.4	2 225.2	5.6	26.6
Trend series							
Dwelling units	no.	171	-3.4	17.1	11 430	1.3	12.3
<b>BUILDING COMMENCEMENTS, Sep qtr 96</b>							
New houses	no.	210	-38.6	-39.3	20 461	-1.7	-14.1
Value of houses commenced	\$m	25.6	-28.7	-31.0	2 202.3	-0.2	-9.4
Value of non-residential building commenced	\$m	108.8	-26.4	76.3	2 936.6	0.3	19.3
Value of total commencements	\$m	156.2	-26.7	12.9	6 556.6	-2.0	1.1
<b>PRICE INDEXES</b>							
Established house price index, Sep qtr 96 (1989-90=100.0)		126.6	-0.5	-1.6	114.3	0.3	1.7

For footnotes see end of table.

Indicator	Unit	Australian Capital Territory			Australia		
		Latest figure	Change from		Latest figure	Change from	
			Previous period	Same period previous year		Previous period	Same period previous year
<b>PRICES, WAGES AND CONSUMER SPENDING</b>							
CONSUMER PRICE INDEX, Dec qtr 96							
Food	(1989-90=100.0)	122.0	1.4	2.7	119.4	0.9	3.2
Housing	(1989-90=100.0)	107.9	-3.7	-3.5	103.2	-2.7	-2.7
Transportation	(1989-90=100.0)	130.2	1.0	2.4	124.5	0.9	1.8
All groups	(1989-90=100.0)	121.4	—	1.2	120.3	0.2	1.5
AVERAGE WEEKLY EARNINGS, Aug 96							
Original series							
Males	\$	769.9	1.0	2.8	679.8	0.9	2.6
Females	\$	561.6	2.9	8.8	447.1	0.4	4.0
Persons	\$	663.9	2.5	5.0	570.0	0.6	2.8
Trend series							
Males	\$	770.7	1.4	3.0	680.2	0.6	2.8
Females	\$	566.2	2.7	9.2	450.1	1.0	4.0
Persons	\$	664.5	1.9	5.0	571.9	0.6	3.1
RETAIL TURNOVER, Dec 96							
Original series							
Food retailing	\$m	73.9	-15.4	0.7	4 363.2	-7.1	8.1
Department stores	\$m	20.1	-55.6	2.0	841.0	-54.2	0.9
Hospitality and services	\$m	28.3	-12.9	9.7	1 774.5	-9.9	-1.4
All other retailing	\$m	62.1	-34.2	13.9	3 276.6	-30.2	1.8
Total	\$m	184.4	-29.0	6.3	10 255.3	-22.3	3.7
Trend series							
Food retailing	'000	76.5	-1.0	0.9	4 214.1	0.1	3.9
Department stores	\$m	24.0	0.4	0.8	973.3	0.2	0.4
Hospitality and services	\$m	30.7	0.3	7.3	1 692.5	0.3	-4.6
All other retailing	%	66.0	2.3	13.8	3 357.9	0.1	1.7
Total	'000	197.2	0.5	5.9	10 237.8	0.2	1.4
<b>TOURISM AND TRANSPORT</b>							
HOTELS, MOTELS AND GUEST HOUSE ACCOMMODATION, Jun qtr 96							
Original series							
Room nights	'000	197.6	-8.5	-6.1	9 297.6	5.8	-0.1
Takings at current prices	\$m	18.2	-10.3	-4.2	897.1	7.3	5.3
Takings at 1989-90 prices	\$m	15.0	-10.2	-5.7	746.2	7.1	3.0
Room occupancy rate (Sep qtr 96)(a)	%	57.5	-6.0	-5.2	58.8	2.7	-1.1
Seasonally adjusted series							
Room nights	'000	196.3	-12.2	-6.4	9 037.5	-1.5	0.2
Takings at current prices	\$m	18.3	-11.6	-4.7	876.2	-1.4	5.5
Takings at 1989-90 prices	\$m	15.1	-11.7	-6.2	728.9	-1.6	3.2
Trend series							
Room nights	'000	207.1	-1.0	-1.4	9 100.8	-0.5	0.9
Takings at current prices	\$m	19.3	0.5	1.6	887.4	0.8	7.4
Takings at 1989-90 prices	\$m	15.9	0.6	-0.6	737.0	0.3	4.9
NEW MOTOR VEHICLE REGISTRATIONS, Dec 96							
Motor vehicles	no.	803	1.5	-8.5	46 169	-15.4	3.8
Seasonally adjusted motor vehicles	no.	991	25.4	-6.5	55 591	2.9	5.0
Trend motor vehicles	no.	879	0.9	-16.7	54 683	1.4	3.7

For footnotes see end of table.

Indicator	Unit	Australian Capital Territory			Latest figure	Australia	
		Latest figure	Previous period	Change from		Previous period	Change from
				Same period previous year			Same period previous year
AGGREGATE INDICATORS							
STATE ACCOUNTS, Sep qtr 96(b)							
Original series							
Gross State product at av. 1989-90 prices	\$m	2 076	-6.1	1.3	119 502	9.5	3.8
Gross State product at current prices	\$m	2 528	-5.1	5.7	135 799	9.9	5.3
State final demand at av. 1989-90 prices	\$m	2 806	-9.3	-4.5	114 162	6.5	3.5
Private final consumption expenditure	\$m	1 449	2.0	3.1	81 884	5.9	3.7
Private gross fixed capital expenditure	\$m	175	-11.6	-3.3	22 500	9.6	9.9
Trend series							
Gross State product at av. 1989-90 prices	\$m	2 142	-0.9	2.0	111 471	0.6	3.2
Gross State product at current prices	\$m	2 611	0.4	6.0	127 373	1.0	4.9
State final demand at av. 1989-90 prices	\$m	2 884	-2.6	-3.4	109 105	0.5	3.1
Private final consumption expenditure	\$m	1 435	0.7	3.5	77 983	0.6	3.9
Private gross fixed capital expenditure	\$m	185	-4.6	-1.1	21 077	1.4	9.1

(a) Change shown in terms of percentage points.

(b) State estimates are not comparable to national estimates for the June quarter 1995 due to revised aggregates in *Australian National Accounts, State Accounts* (5242.0).

Source: ABS Catalogue nos: 3101.0, 5242.0, 5609.0, 6202.0, 6203.0, 6302.0, 6321.0, 6354.0, 6401.0, 6408.0, 6416.0, 8501.0, 8634.0, 8635.8, 8731.0, 8752.0, 9214.0, 9301.0.

Indicator	Unit	Latest period	NSW	Vic.	Qld	SA	WA	Tas.	NT	ACT	Aust.
<b>POPULATION</b>	'000	Jun qtr 96	6 190.2	4 541.0	3 354.7	1 479.2	1 762.7	473.4	177.7	308.2	18 348.7
<b>LABOUR FORCE</b>											
Employed persons (trend)	'000	Feb 97	2 817.8	2 107.0	1 546.2	660.5	854.9	195.8	82.2	153.4	8 418.8
Unemployment rate (trend)	%	Feb 97	8.0	9.0	9.7	9.4	7.6	10.7	5.5	8.0	8.6
<b>STATE ACCOUNTS(a)</b>											
Gross State product at 1989-90 prices (trend)	\$m	Sep qtr 96	37 493	28 737	18 211	7 550	12 278	2 181	1 242	2 142	111 471
Gross State product at current prices (trend)	\$m	Sep qtr 96	43 774	32 691	20 273	8 816	13 125	2 623	1 357	2 611	127 373
<b>BUILDING APPROVALS</b>											
Dwelling units approved	no.	Jan 97	3 767	2 144	2 239	351	1 182	153	135	135	10 106
Dwelling units approved (trend)	no.	Jan 97	3 973	2 223	2 732	471	1 334	160	159	171	11 430
Value of non-residential building approved	\$m	Jan 97	413.0	228.1	202.2	41.9	66.7	10.9	7.8	62.8	1 033.5
Value of all buildings approved	\$m	Jan 97	883.8	499.3	430.3	80.1	200.6	26.6	22.4	82.0	2 225.2
<b>ENGINEERING CONSTRUCTION</b>											
Value of engineering construction work done	\$m	Sep qtr 96	1 303.7	519.8	877.4	139.1	735.0	49.4	59.0	35.9	3 719.3
<b>AVERAGE WEEKLY EARNINGS</b>											
Full-time adult ordinary time (trend)	\$	Nov 96	720.7	675.4	643.2	637.8	687.2	644.3	687.3	798.1	686.5
<b>RETAIL TRADE</b>											
Retail turnover (trend)	\$m	Jan 97	3 641.2	2 416.4	1 834.4	758.3	1 030.6	249.0	110.7	197.2	10 237.8
<b>HOTELS, MOTELS &amp; GUEST HOUSE ACCOMMODATION</b>											
Room nights occupied (trend)	'000	Sep qtr 96	3 105.2	1 503.0	2 394.9	513.3	835.2	255.2	286.8	207.1	9 100.8
<b>NEW MOTOR VEHICLE REGISTRATIONS</b>											
Trend	no.	Jan 97	18 804	13 731	10 106	3 546	5 760	1 212	645	879	54 683
	Unit	Latest period	Syd.	Melb.	Bris.	Adel.	Perth	Hob.	Dar.	Canb.	Aust.
<b>CONSUMER PRICE INDEX</b>											
Food	(b)	Dec qtr 96	120.0	118.4	118.0	120.7	120.8	120.6	118.8	122.0	119.4
Housing	(b)	Dec qtr 96	107.7	96.7	109.6	100.5	98.1	104.8	120.6	107.9	103.2
Transportation	(b)	Dec qtr 96	125.4	124.1	123.3	125.5	122.6	121.8	122.3	130.2	124.5
All Groups	(b)	Dec qtr 96	120.4	119.9	120.8	122.6	118.4	121.3	121.7	121.4	120.3
Average retail prices (cents)											
Milk, carton, supermarket sales	1 litre	Dec qtr 96	115	126	115	116	125	120	116	112	n.a.
Bread, white loaf, sliced, supermarket sales	680 g	Dec qtr 96	203	202	186	157	174	170	194	192	n.a.
Beef, rump steak	1 kg	Dec qtr 96	1 185	1 081	1 041	1 061	1 051	1 088	1 237	1 022	n.a.
Chicken, frozen	1 kg	Dec qtr 96	349	365	329	375	338	393	356	330	n.a.
Potatoes	1 kg	Dec qtr 96	97	102	82	73	124	87	104	92	n.a.
Coffee, instant (jar)	150 g	Dec qtr 96	575	563	563	513	559	632	579	569	n.a.
Scotch nip, public bar	30 ml	Dec qtr 96	317	285	252	343	333	246	312	275	n.a.
Private motoring petrol											
Leaded	1 litre	Dec qtr 96	75.6	74.4	66.7	76.1	77.2	78.3	80.3	77.8	n.a.
Unleaded	1 litre	Dec qtr 96	73.4	72.2	64.5	73.7	75.1	76.2	78.3	75.6	n.a.

(a) State estimates are not comparable to national estimates for the June quarter 1995 due to revised aggregates in Australian National Accounts, State Accounts (5242.0).

(b) Base year: 1989-90=100.0.



Indicator	Unit	Latest period	NSW	Vic.	Qld	SA	WA	Tas.	NT	ACT	Aust.
<b>POPULATION</b>	'000	Sep qtr 96	0.3	0.2	0.5	0.1	0.4	—	0.1	0.2	0.3
<b>LABOUR FORCE</b>											
Employed persons (trend)	'000	Feb 97	0.1	0.1	0.1	0.1	0.2	-0.4	-0.1	0.3	0.1
Unemployment rate (trend)	%	Feb 97	0.1	—	—	—	—	0.1	0.2	-0.2	—
<b>STATE ACCOUNTS(a)</b>											
Gross State product at 1989-90 prices (trend)	\$m	Sep qtr 96	0.9	0.2	1.3	—	0.3	-0.5	0.4	-0.9	0.6
Gross State product at current prices (trend)	\$m	Sep qtr 96	1.6	1.0	1.3	-0.3	—	0.9	0.8	0.4	1.0
<b>BUILDING APPROVALS</b>											
Dwelling units approved	no.	Jan 97	7.1	6.9	-3.2	-14.4	-4.8	—	9.8	66.7	2.7
Dwelling units approved (trend)	no.	Jan 97	2.4	2.5	-0.8	-3.3	—	1.3	-3.6	-3.4	1.3
Value of non-residential building approved	\$m	Jan 97	-18.9	2.9	57.2	49.6	43.7	147.7	-40.9	280.6	6.8
Value of all buildings approved	\$m	Jan 97	-6.9	8.4	18.2	10.5	11.0	35.0	-24.6	169.7	5.6
<b>ENGINEERING CONSTRUCTION</b>											
Value of engineering construction work done	\$m	Sep qtr 96	-9.2	-20.5	9.5	-38.5	-13.3	-28.7	23.2	-10.0	-9.8
<b>AVERAGE WEEKLY EARNINGS</b>											
Full-time adult ordinary time (trend)	\$	Nov 96	1.2	1.0	1.7	0.4	-0.1	1.2	1.2	1.7	1.1
<b>RETAIL TRADE</b>											
Retail turnover (trend)	\$m	Jan 97	-0.3	0.9	-0.3	0.1	0.7	0.6	-0.5	0.5	0.2
<b>HOTELS, MOTELS &amp; GUEST HOUSE ACCOMMODATION</b>											
Room nights occupied (trend)	'000	Sep qtr 96	-0.8	0.1	-0.5	-1.1	0.7	-1.8	-1.3	-1.0	-0.5
<b>NEW MOTOR VEHICLE REGISTRATIONS</b>											
Trend	no.	Jan 97	2.1	1.3	1.0	2.1	0.2	-1.3	4.2	0.9	1.4
	Unit	Latest period	Syd.	Melb.	Bris.	Adel.	Perth	Hob.	Dar.	Canb.	Aust.
<b>CONSUMER PRICE INDEX</b>											
Food	(b)	Dec qtr 96	1.5	0.8	0.3	1.3	0.4	0.5	-0.3	1.4	0.9
Housing	(b)	Dec qtr 96	-2.4	-2.9	-2.5	-2.9	-2.9	-2.4	-0.9	-3.7	-2.7
Transportation	(b)	Dec qtr 96	1.1	0.8	0.9	0.9	0.5	1.8	0.3	1.0	0.9
All Groups	(b)	Dec qtr 96	0.2	0.3	0.2	0.3	0.1	0.2	0.1	0.0	0.2
Average retail prices (cents)											
Milk, carton, supermarket sales	1 litre	Dec qtr 96	0.9	0.8	0.9	1.8	0.8	—	—	2.8	n.a.
Bread, white loaf, sliced, supermarket sales	680 g	Dec qtr 96	4.1	5.2	-3.6	1.9	-5.4	1.8	—	5.5	n.a.
Beef, rump steak	1 kg	Dec qtr 96	-2.9	-2.3	-1.4	-5.5	-2.9	1.3	-4.0	-2.5	n.a.
Chicken, frozen	1 kg	Dec qtr 96	13.7	3.7	-3.8	1.6	-2.3	-1.0	-7.0	2.5	n.a.
Potatoes	1 kg	Dec qtr 96	12.8	8.5	-8.9	9.0	3.3	11.5	-4.6	10.8	n.a.
Coffee, instant (jar)	150 g	Dec qtr 96	0.5	-0.9	-1.6	0.8	-2.6	2.4	2.5	0.5	n.a.
Scotch nip, public bar	30 ml	Dec qtr 96	—	0.7	0.4	4.3	2.8	2.1	0.6	-2.5	n.a.
Private motoring petrol											
Leaded	1 litre	Dec qtr 96	3.8	1.1	3.6	3.4	3.5	2.8	1.1	2.1	n.a.
Unleaded	1 litre	Dec qtr 96	3.8	1.0	3.7	3.4	3.6	2.8	1.2	2.2	n.a.

(a) State estimates are not comparable to national estimates for the June quarter 1995 due to revised aggregates in *Australian National Accounts, State Accounts* (5242.0).

(b) Base year: 1989-90=100.0.





## For more information . . .

The ABS publishes a wide range of statistics and other information on Australia's economic and social conditions. Details of what is available in various publications and other products can be found in the ABS Catalogue of Publications and Products available from all ABS Offices.

### ABS Products and Services

Many standard products are available from ABS bookshops located in each State and Territory. In addition to these products, information tailored to the needs of clients can be obtained on a wide range of media by contacting your nearest ABS Office. The ABS also provides a Subscription Service for standard products and some tailored information services.

### National Dial-a-Statistic Line

0055 86 400

*Steadycom P/L: premium rate 25c/20 secs.*

This number gives 24-hour access, 365 days a year, for a range of important economic statistics including the CPI.

### Internet

<http://www.abs.gov.au>

A wide range of ABS information is available via the Internet, with basic statistics available for each State, Territory and Australia. We also have Key National Indicators, ABS product release details and other information of general interest.

## Sales and Inquiries

Keylink      STAT.INFO/ABS  
X.400      (C:Australia,PUB:Telememo,O:ABS,FN:STAT,SN:INFO)  
Internet      stat.info@abs.telememo.au

National Mail Order Service      (06) 252 5249  
Subscription Service      1800 02 0608

	Information Inquiries	Bookshop Sales
SYDNEY	(02) 9268 4611	(02) 9268 4620
MELBOURNE	(03) 9615 7755	(03) 9615 7755
BRISBANE	(07) 3222 6351	(07) 3222 6350
PERTH	(09) 360 5140	(09) 360 5307
ADELAIDE	(08) 8237 7100	(08) 8237 7582
CANBERRA	(06) 252 6627	(06) 207 0326
HOBART	(03) 6222 5800	(03) 6222 5800
DARWIN	(08) 8943 2111	(08) 8943 2111



Client Services, ABS, PO Box 10, Belconnen ACT 2616

Produced by the Australian Government Publishing Service  
© Commonwealth of Australia 1997

Recommended retail price: \$14.00



2130380003976  
ISSN 1320-808X